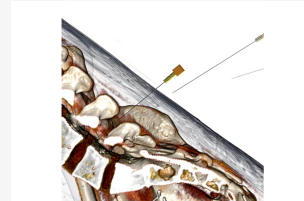
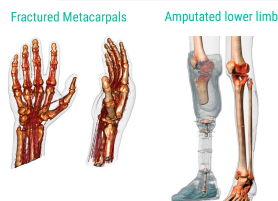


ANATOMAGE TABLE CLINICAL - Portable virtual dissection table

Nº DE PRODUTO: 2663



DESCRIÇÃO:

Based on The Anatomage Table, the most technologically advanced 3D anatomy visualization system for anatomy education, **Table Clinical is the premier clinical solution for looking at real patient anatomy, medical education, clinical planning**, and is FDA cleared for use in medical diagnosis.

HABILIDADES:

- Incise without a physical patient
- Easily remove hard tissue and visualize soft-tissue and vasculature
- Scan and view cadavers virtually

MORE THAN SIMULATORS S.L.

Calle de la Hoya, 4 2º
44570 Calanda (Teruel)
Espanha

CONTACTO

sales@morethansimulators.com
(+351) 21 123 85 18
<https://morethansimulators.com>

- Teach and review from real patient data
- Upload CT/MRI images
- 3D Scan reconstruction
- Teach vertebrate anatomy, embryology and histology.

CARACTERÍSTICAS:

3D ANATOMY VISUALIZATION:

- Make incisions and see internal anatomy on the virtual patient without the need to make physical cuts on the live patient.
- The Craniotomy Tool allows for removal of the skull and visualization of underlying soft-tissue and vasculature.
- Users can view internal anatomy, pathology, or clinically relevant information with high accuracy and detail.

3D CLINICAL ANATOMY LIBRARY:

- Over one thousand clinical cases, which includes data from vertebrate anatomy, embryology, and histology.
- Users and clinicians can access the original scan data, the resulting 3D image, and medical case notes.
- The large number of cases ensure that clinicians and students can be trained and gain exposure to a wide range of abnormal pathologies

MEDICAL TRAINING AND PATIENT CONSULTATION:

- Train students using a virtual cadaver, real patient data and CT/MRI scans for review of a digital and real body.
- As well, visualization is easier for patients when viewing their anatomy in 3D as opposed to 2D black and white slices.
- Now patients without a medical background can more effectively visualize and be advised about their own anatomy and medical condition.

INCLUI:

- 1 Virtual dissection table with wheels
- 1 Computers
- 1 Integrated FullHD screens
- 1 Set of power supply cables

MODULOS ADICIONAIS:

ANATOMAGE TABLE COMPANION APP (option):

- For the first time, a real human cadaver can be engaged directly through an iPad app. And this is made possible through our Anatomage Table Companion app.

MORE THAN SIMULATORS S.L.

Calle de la Hoya, 4 2º
44570 Calanda (Teruel)
Espanha

CONTACTO

sales@morethansimulators.com
(+351) 21 123 85 18
<https://morethansimulators.com>



More Than Simulators™
Excellence. Every patient. Every time.

- The Anatomage Table Companion app supplements in-class lessons that are incorporated with the Anatomage Table.
- Students are enabled to quickly find answers to any anatomy questions through thousands of annotated structures
- The app contains the most accurate anatomical data set of a male cadaver.
- By providing the detailed human body representation, the Anatomage Table Companion app provides essential anatomy knowledge for students in all medical disciplines.

MORE THAN SIMULATORS S.L.

Calle de la Hoya, 4 2º
44570 Calanda (Teruel)
Espanha

CONTACTO

sales@morethansimulators.com
(+351) 21 123 85 18
<https://morethansimulators.com>