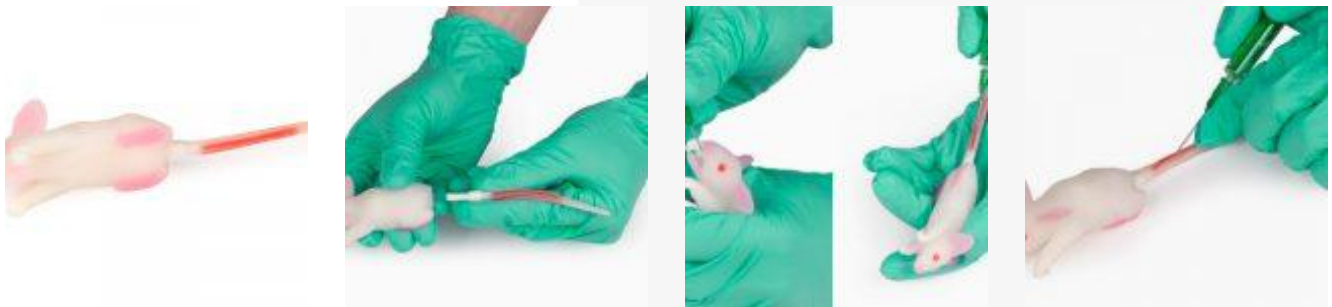


# Mouse model for venous access and drug administration

PRODUCT NUMBER: 3244



## DESCRIPTION:

The mouse model allows simulating various scenarios such as venous access and drug administration. It also allows students, lab technicians and caregivers to learn how to confidently and safely handle rodents.

The mouse has landmarks such as the skull, tibia, sternum and hip bones.

## SKILLS:

- Rodent handling
- Physical evaluation

### **MORE THAN SIMULATORS S.L.**

Calle de la Hoya, 4 2º  
44570 Calanda (Teruel)  
Spain

### **CONTACTO**

sales@morethansimulators.com  
(+34) 936 06 77 05 / (+351) 21 123 85 18  
<https://morethansimulators.com>

- Intravenous access
- Caudal vein injection
- Caudal vein blood withdrawal
  
- Subcutaneous injection &#8211; dorsal and ventral
- Drug administration
- Physical assessment
- Oral administration
- Fixation / Restraint

## CHARACTERISTICS:

### GENERAL:

- Anatomically complete and correct
  
- Points of reference such as skull, tibia, sternum, and hip bones
  
- The forelimbs are closely movable
- The tail of this amazing rodent model can be detached and removed conveniently, while allowing intravenous access through the tail vein.
- Body length: 19 cm
- Approximate weight: 200 g

## INCLUDE:

- 1 Mouse model for venous access and drug administration
- Care instructions

### **MORE THAN SIMULATORS S.L.**

Calle de la Hoya, 4 2º  
44570 Calanda (Teruel)  
Spain

### **CONTACTO**

sales@morethansimulators.com  
(+34) 936 06 77 05 / (+351) 21 123 85 18  
<https://morethansimulators.com>