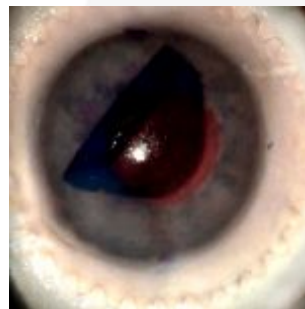




LINK - Hybrid EK platform

PRODUCT NUMBER: 1760



DESCRIPTION:

LINK is a hybrid (Organic-Synthetic) **EK training platform** that creates an anterior chamber model with a **real full thickness donor cornea** (not included) and an synthetic iris/sclera complex providing both functional and aesthetic realism.

LINK eliminates the inconsistencies of using research globes and provides the opportunity to reuse quality tissue.

SKILLS:

- Lamellar Keratoplasty scenarios (LK)
- DMEK
- PDEK
- Instrument manouvering skills

MORE THAN SIMULATORS S.L.

Calle de la Hoya, 4 2º
44570 Calanda (Teruel)
Spain

CONTACTO

sales@morethansimulators.com
(+34) 936 06 77 05 / (+351) 21 123 85 18
<https://morethansimulators.com>



CHARACTERISTICS:

INSTRUCTIONS FOR USE:

The system requires using a tool to consistently assemble the anterior segment with the donor cornea by crimping them with a snap "LinK" ring. To assemble:

- Lubricate the tool base posts with water or water based gel.
- Wet and slide a new LinK ring on the tool base.
- Insert and center the donor cornea inside the ring.
- Slide the anterior segment down the tool base so that it sits flush on top of the LinK ring, with the iris facing down towards the cornea.
- Insert the tool press on the tool base so that it is flush with the anterior segment, then press evenly and firmly on the press to assemble the LinK AC.
- Remove the assembled AC from the tool base and insert it into the LinK holder by gently opening the flexible holder socket.
- Fix the holder to a smooth surface with the suction cup.
- Lift the suction release tab to remove HOLDER from surface. **DO NOT PULL ON THE HOLDER.**

INCLUDE:

- 1 Shallow anterior Segment simulator
- 1 Storage box
- * Donor cornea not included

MORE THAN SIMULATORS S.L.

Calle de la Hoya, 4 2º
44570 Calanda (Teruel)
Spain

CONTACTO

sales@morethansimulators.com
(+34) 936 06 77 05 / (+351) 21 123 85 18
<https://morethansimulators.com>