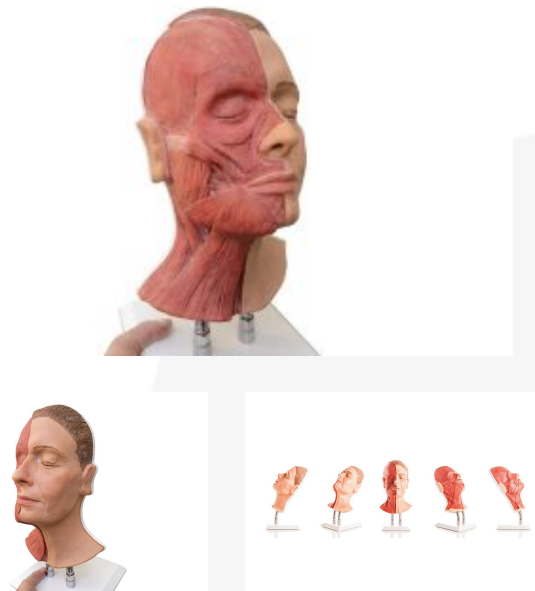


FACIAL INJECTION SIMULATOR - WITH MUSCLES

PRODUCT NUMBER: 3176



DESCRIPTION:

Our facial injection simulator are made of a high-quality platinum-hardened prosthesis silicone with a realistic tactile feel. The skins are then mounted on a rigid foam skull that has various landmarks to aid the teaching process.

These skulls are attached to 2 flexible stands that allow the head to be tilted into suitable positions. Each head is then hand painted, attached to a plastic backing, and mounted on a high quality base.

SKILLS:

- Botox (botulinum toxin) injection
- Superficial filling techniques
- Muscular anatomy recognition

MORE THAN SIMULATORS S.L.

Calle de la Hoya, 4 2º
44570 Calanda (Teruel)
Spain

CONTACTO

sales@morethansimulators.com
(+34) 936 06 77 05 / (+351) 21 123 85 18
<https://morethansimulators.com>



CHARACTERISTICS:

GENERAL:

- Made from ultra-realistic high quality silicone
- Expertly sculpted and moulded
- Hand-painted down to the smallest detail

INSTRUCTIONS FOR USE:

- Allows fluid injection: After administration, dry the treated area with a tissue and/or paper. Pinch the area to remove the fluid from the inside through the same hole where the injection was made.
- Check that the fluid has been completely removed to avoid deformation of the appearance of the simulator.

INCLUDE:

- 1 Facial injections model
- 1 Stand

MORE THAN SIMULATORS S.L.

Calle de la Hoya, 4 2º
44570 Calanda (Teruel)
Spain

CONTACTO

sales@morethansimulators.com
(+34) 936 06 77 05 / (+351) 21 123 85 18
<https://morethansimulators.com>